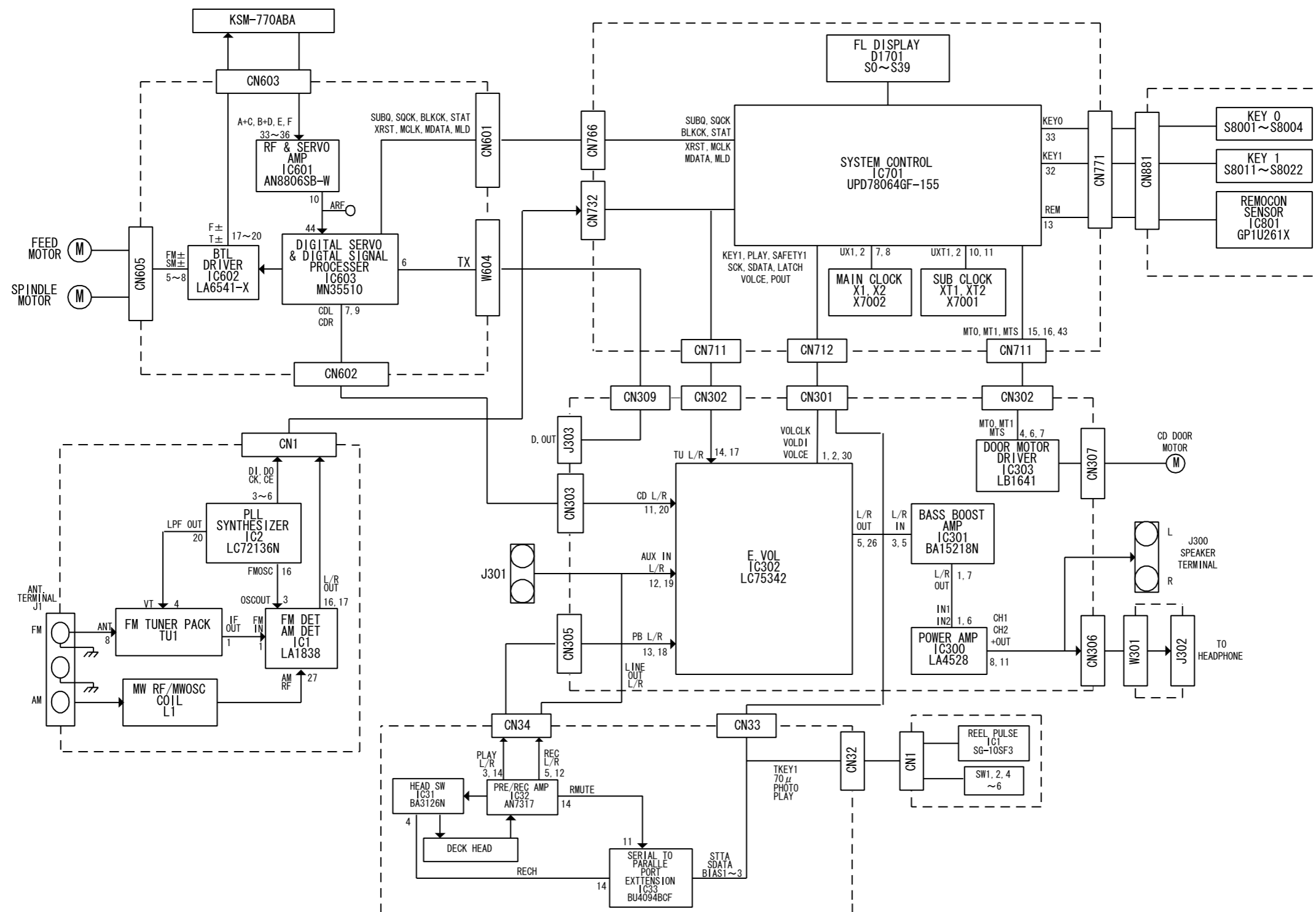
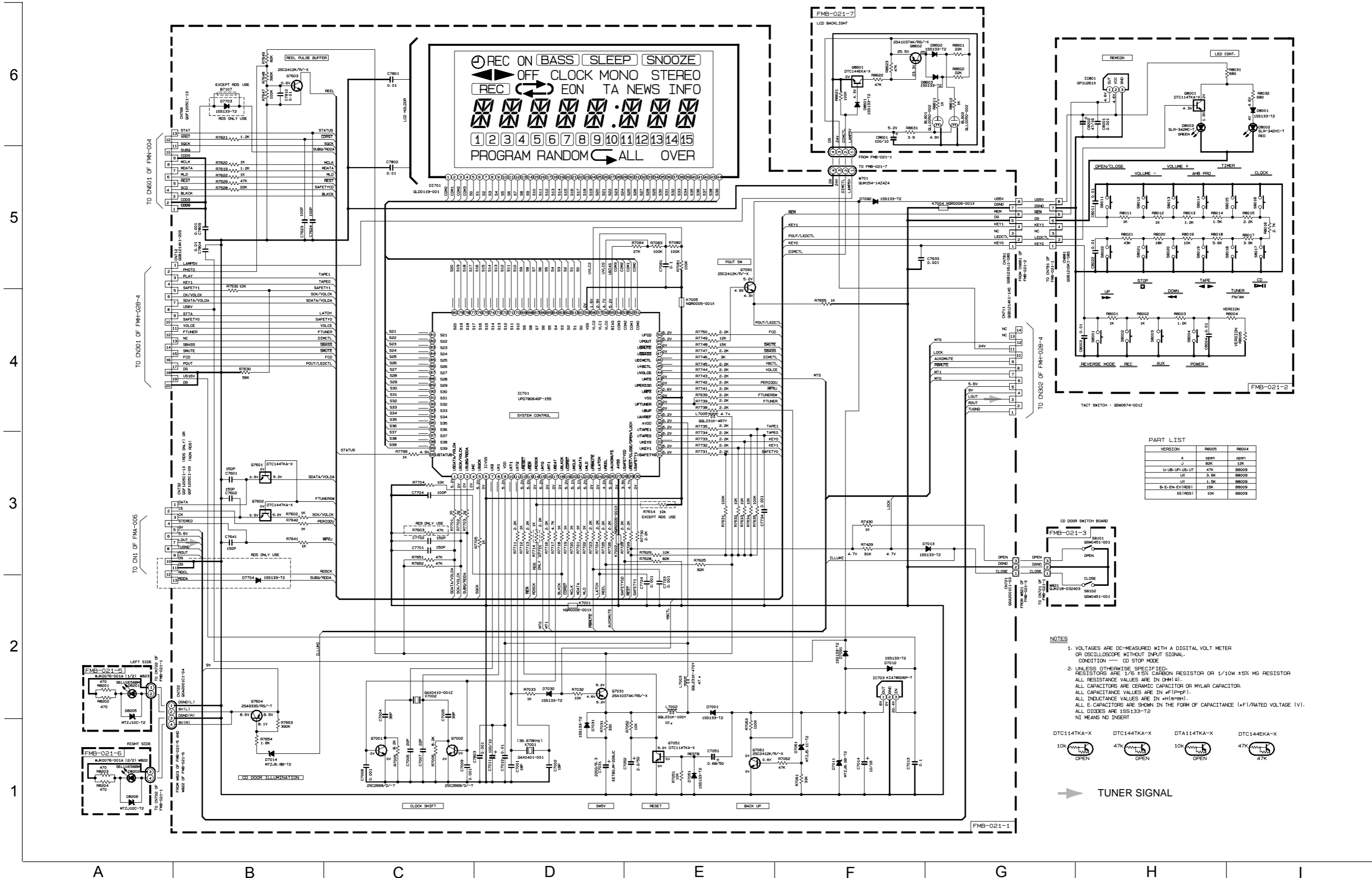


Block diagram



Standard schematic diagrams

■ CPU & LCD driver circuit (UX-V30)



PART LIST

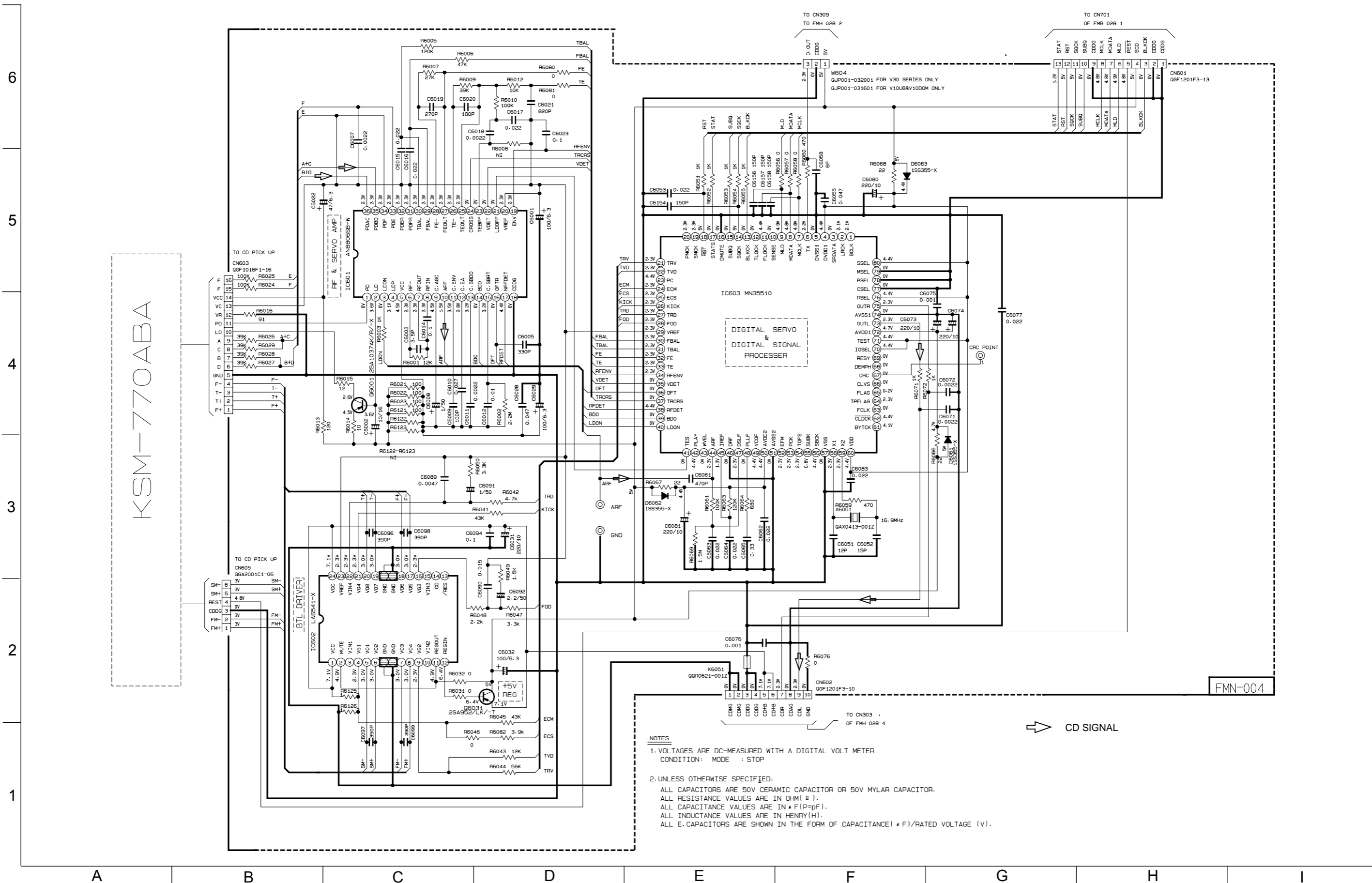
VERSION	R8005	R8004
A	open	open
J	80k	12k
U-UB-UB-UT	47k	BR009
UB	3.6k	BR008
UV	1.5k	BR009
B-E-EN-EV-IRDS1	15k	BR009
EE (IRDS)	10k	BR009

- NOTES**
- VOLTAGES ARE DC-MEASURED WITH A DIGITAL VOLT METER OR OSCILLOSCOPE WITHOUT INPUT SIGNAL. CONDITION — CD STOP MODE
 - UNLESS OTHERWISE SPECIFIED, RESISTORS ARE 1/6 ± 5% CARBON RESISTOR OR 1/10W ± 5% MG RESISTOR. ALL RESISTANCE VALUES ARE IN Ω (Ω). ALL CAPACITORS ARE CERAMIC CAPACITOR OR MYLAR CAPACITOR. ALL CAPACITANCE VALUES ARE IN pF (pF). ALL INDUCTANCE VALUES ARE IN μH (μH). ALL ELECTROLYTIC CAPACITORS ARE SHOWN IN THE FORM OF CAPACITANCE (μF)/RATED VOLTAGE (V). ALL DIODES ARE 1SS133-T2. NI MEANS NO INSERT



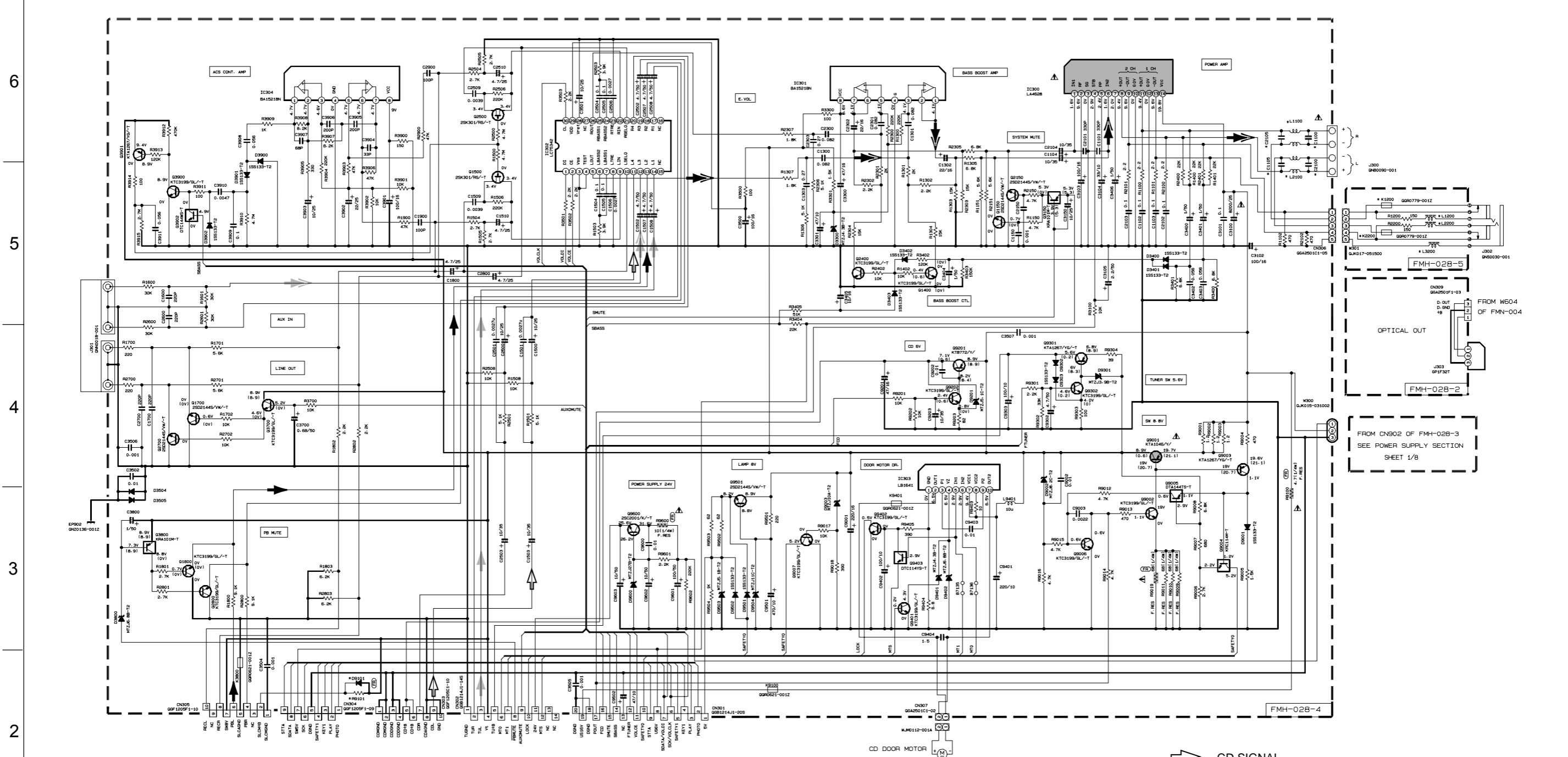
➔ TUNER SIGNAL

■ CD servo circuit (UX-V30)



- NOTES
1. VOLTAGES ARE DC-MEASURED WITH A DIGITAL VOLT METER
CONDITION: MODE : STOP
 2. UNLESS OTHERWISE SPECIFIED.
ALL CAPACITORS ARE 50V CERAMIC CAPACITOR OR 50V MYLAR CAPACITOR.
ALL RESISTANCE VALUES ARE IN OHM(Ω).
ALL CAPACITANCE VALUES ARE IN # F(P=pF).
ALL INDUCTANCE VALUES ARE IN HENRY(H).
ALL E-CAPACITORS ARE SHOWN IN THE FORM OF CAPACITANCE(# F)/RATED VOLTAGE (V).

Power amplifier circuit (UX-V30)

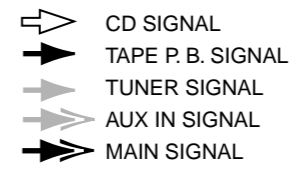


TO SLC-S1M TO SLC-S1M FROM CN602 OF FMN-004 TO CN711 OF FMB-021-1 TO CN712 OF FMB-021-1

* PART LIST

MODEL	PART	VERSION	L1200/2200/3200	K1200/2200	C1100/2100	L1100	L2100	C1100/2100	D9101	R9101
B/E/EE/EN/EA	02L231K-470V	090779-0012	200	090779-001	0.0033u	NONE	5.61L/4M F.RES	NONE	NONE	5.61L/4M F.RES
DM	87128/7130/7131	87129/7132	NONE	87208/7209	87211/7212	NONE	15R35-400A-TS	NONE	NONE	NONE
J/C	87128/7130/7131	87129/7132	NONE	87208/7209	87211/7212	NONE	15R35-400A-TS	NONE	NONE	NONE
U/LB/UB/UT/UV	87128/7130/7131	87129/7132	NONE	87208/7209	87211/7212	NONE	15R35-400A-TS	NONE	NONE	NONE
UP	87128/7130/7131	87129/7132	NONE	87208/7209	87211/7212	NONE	15R35-400A-TS	NONE	NONE	NONE

Parts are safety assurance parts. When replacing those parts make sure to use the specified one.



NOTES
 1. VOLTAGES ARE DC-MEASURED WITH A DIGITAL VOLT METER OR OSCILLOSCOPE WITHOUT INPUT SIGNAL.
 CONDITION --- CD STOP MODE
 INSIDE BRACKET VALUES ARE OTHER FUNCTIONS
 2. UNLESS OTHERWISE SPECIFIED, RESISTORS ARE 1/8W ±5% CARBON RESISTOR.
 ALL RESISTANCE VALUES ARE IN OHMS (Ω).
 ALL CAPACITORS ARE CERAMIC CAPACITOR OR NYLAR CAPACITOR.
 ALL CAPACITANCE VALUES ARE IN pF (pF).
 ALL INDUCTANCE VALUES ARE IN mH (mH).
 ALL E-CAPACITORS ARE SHOWN IN THE FORM OF CAPACITANCE (μF)/RATED VOLTAGE (V).
 ALL DIODES (D): Npn: 15R153-T2



1

2

3

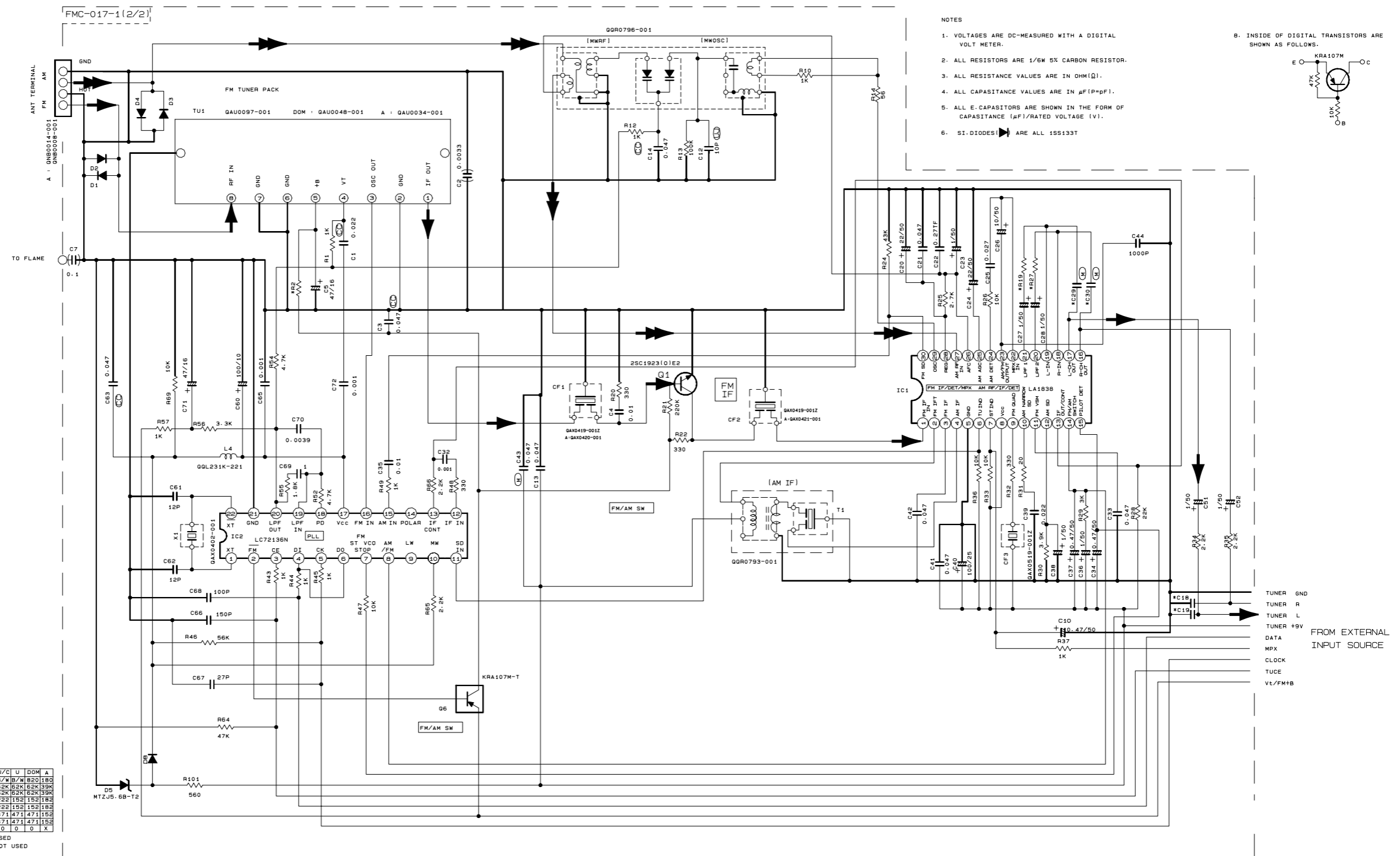
4

5

6

A B C D E F G H I

■ Tuner circuit (UX-V30)



- NOTES
1. VOLTAGES ARE DC-MEASURED WITH A DIGITAL VOLT METER.
 2. ALL RESISTORS ARE 1/6W 5% CARBON RESISTOR.
 3. ALL RESISTANCE VALUES ARE IN OHM(Ω).
 4. ALL CAPASITANCE VALUES ARE IN μF(P=pF).
 5. ALL E. CAPASITORS ARE SHOWN IN THE FORM OF CAPASITANCE (μF)/RATED VOLTAGE (V).
 6. SI. DIODES! ARE ALL 1SS133T
- B. INSIDE OF DIGITAL TRANSISTORS ARE SHOWN AS FOLLOWS.
-

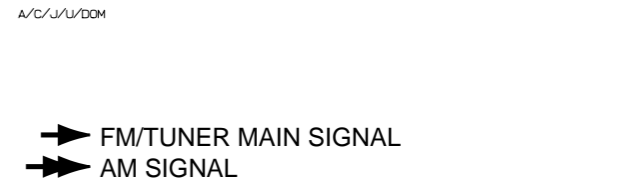
J/C	U	DOM	A
R2	B/W	B/W	B20 180
R19	62K	62K	62K 33K
R27	62K	62K	62K 33K
C29	222	152	152 182
C30	222	152	152 182
C18	471	471	471 152
C19	471	471	471 152
C44	0	0	0 X

0 : USED
X : NOT USED

CONDITION	PIN NO.	1	2	3	4	5	6	7	8	9	10	11	12	13	14	15	16	17	18	19	20	21	22	23	24	25	26	27	28	29	30
IC1	FM NO SIGNAL	3.5	9.1	3.5	3.5	0.4	7.0	6.4	9.1	0	1.3	0.3	0.5	0.8	8	8	4.3	4.3	4.3	4.3	3.2	3.2	2.8	3.5	0	0	3.4	3.4	3.6	3.6	2.3
	FM 60dB STEREO	3.5	9.1	3.5	3.5	0	0	0.2	9.1	2.3	1.3	4.3	0	0.8	8	8.1	4.3	4.3	4.3	4.3	3.2	3.2	2.8	3.1	0	0	3.6	3.6	3.6	3.6	2.3
	AM NO SIGNAL	3.5	9.1	3.5	3.5	0	9.1	6.4	9.1	2.7	1.3	0	0	0.8	0.1	5.6	4.2	4.2	4.2	4.2	3.2	3.2	2.8	2.9	0.6	0.5	3.5	3.5	3.5	3.5	2.1
IC2	FM NO SIGNAL	2.4	0	0	5.6	4.9	5.6	8	8	3.6	3.8	8.4	0	0	0	0	2.4	4.9	0.7	0.7	7.2	0	2.6								

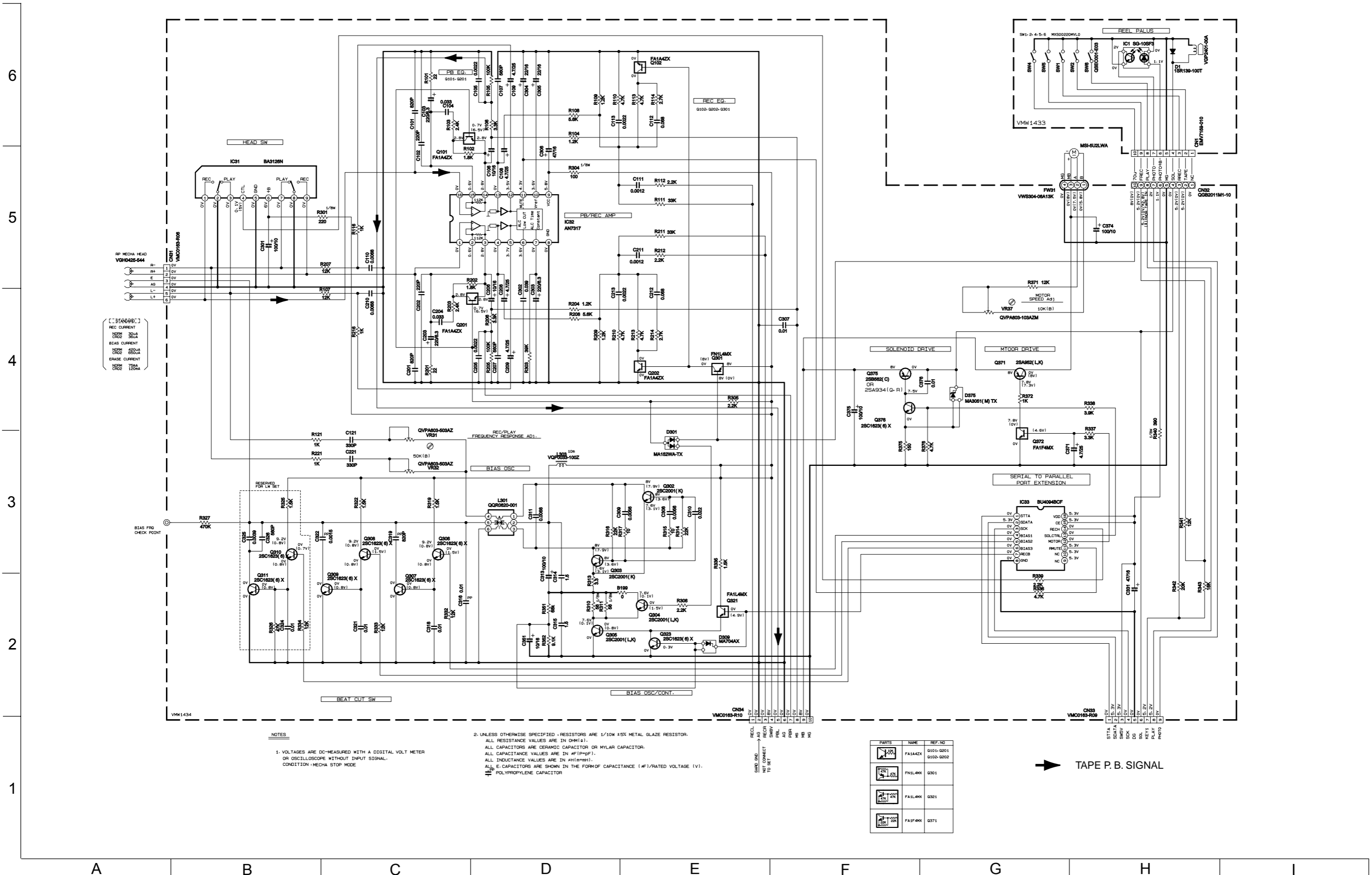
Tr. NO.	Q1	Q6
PIN NO.	E C B E C B	E C B E C B
FM 87.5MHz NO SIGNAL	0 7.4 0.8	8.4 8.3 0
AM 522KHz NO SIGNAL	0 0 0	8.5 0 8.4

Tr. NO.	Q2	Q3	Q4
PIN NO.	E C B E C B E C B	E C B E C B	
AM 522KHz NO SIGNAL	3.5 3.5 0.3	0 0 0.7	0 0 0.7
AM 144KHz NO SIGNAL	3.5 3.5 3.5	0 0 0.1	0 0 0.1



A B C D E F G H I

■ Cassette mecha control circuit



[[STANDARD]]
 REC CURRENT
 NORM 300A
 CRCE 300A
 BIAS CURRENT
 NORM 400A
 CRCE 600A
 ERASE CURRENT
 NORM 700A
 CRCE 1200A

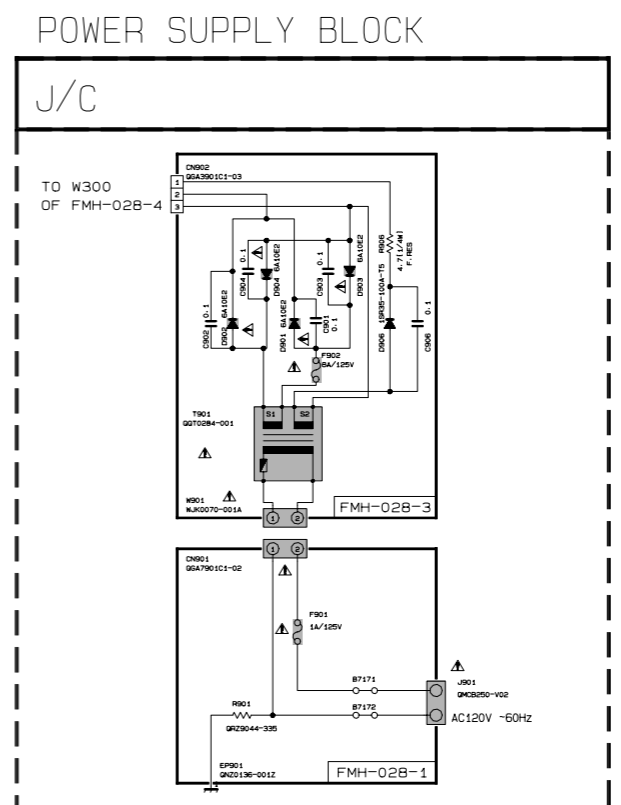
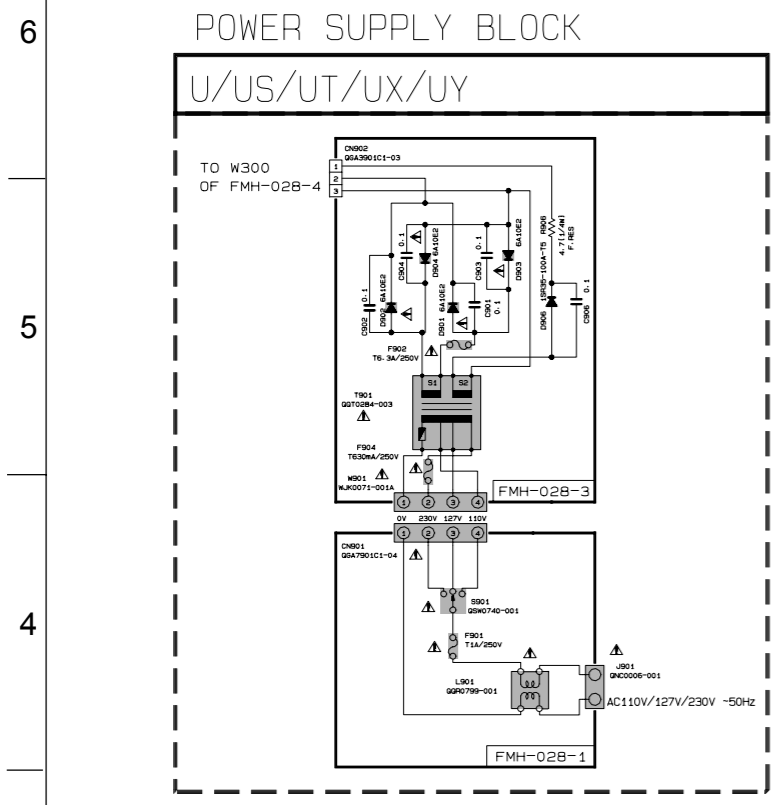
NOTES
 1. VOLTAGES ARE DC-MEASURED WITH A DIGITAL VOLT METER OR OSCILLOSCOPE WITHOUT INPUT SIGNAL. CONDITION - MECHA STOP MODE.
 2. UNLESS OTHERWISE SPECIFIED, RESISTORS ARE 1/10W ±5% METAL GLAZE RESISTOR. ALL RESISTANCE VALUES ARE IN OHM(S). ALL CAPACITORS ARE CERAMIC CAPACITOR OR MYLAR CAPACITOR. ALL CAPACITANCE VALUES ARE IN #F(=pF). ALL INDUCTANCE VALUES ARE IN #H(=mH). ALL E. CAPACITORS ARE SHOWN IN THE FORM OF CAPACITANCE (#F)/RATED VOLTAGE (V). # POLYPROPYLENE CAPACITOR.

PARTS	NAME	REF. NO
	FA1A4Z	Q101-Q201
	FN1L4K	Q301
	FA1L4K	Q302
	FA1F4K	Q371

➔ TAPE P. B. SIGNAL

Power supply circuit (UX-V30)

Power supply circuit (FS-V30)



EXPLANATION OF OVERALL OF SCHEMATIC

MODEL : FS-V30/UX-V30/UX-V30R/UX-V330R

SHEET NUMBER	MODEL NUMBERS TO BE APPLIED	CIRCUITS DESCRIPTION
1/B	FS-V30/UX-V30/V30R/V330R	. PRIMARY WITH MAINS TRANSFORMER
2/B	FS-V30/UX-V30/V30R/V330R	. DC REGULATORS/AUDIO OUTPUT . EXTERNAL INPUT. SOURCE SELECTOR SWITCH
3/B	FS-V30/UX-V30/V30R/V330R	. LCD DISPLAY/SYSTEM CONTROL/USERS KEY CONTROL
4/B	FS-V30/UX-V30/V30R/V330R	. CD SERVO AND CD SYSTEM CONTROL . CD CHANGER MECHANISM CONTROL
5/B	FS-V30/UX-V30/V30R/V330R	. TAPE DECK MECHANISM CONTROL . TAPE CIRCUITS SUCH AS PRE-AMP AND BIAS
6/B	FS-V30/UX-V30	. TUNER RF/IF/FM MULTIPLEX (ONLY FOR J, C, U, UP, UR, US, UT, UV, UX, UY, A, DDM)
7/B	UX-V30R/UX-V330R	. TUNER RF/IF/FM MULTIPLEX (ONLY FOR B, E, EN, EV)
8/B	UX-V30R	. TUNER RF/IF/FM MULTIPLEX (ONLY FOR EE)

EXPLANATION OF OVERALL OF SCHEMATIC

MODEL : FS-V30/UX-V30/UX-V30R/UX-V330R

SHEET NUMBER	MODEL NUMBERS TO BE APPLIED	CIRCUITS DESCRIPTION
1/B	FS-V30/UX-V30/V30R/V330R	. PRIMARY WITH MAINS TRANSFORMER
2/B	FS-V30/UX-V30/V30R/V330R	. DC REGULATORS/AUDIO OUTPUT . EXTERNAL INPUT. SOURCE SELECTOR SWITCH
3/B	FS-V30/UX-V30/V30R/V330R	. LCD DISPLAY/SYSTEM CONTROL/USERS KEY CONTROL
4/B	FS-V30/UX-V30/V30R/V330R	. CD SERVO AND CD SYSTEM CONTROL . CD CHANGER MECHANISM CONTROL
5/B	FS-V30/UX-V30/V30R/V330R	. TAPE DECK MECHANISM CONTROL . TAPE CIRCUITS SUCH AS PRE-AMP AND BIAS
6/B	FS-V30/UX-V30	. TUNER RF/IF/FM MULTIPLEX (ONLY FOR J, C, U, UP, UR, US, UT, UV, UX, UY, A, DDM)
7/B	UX-V30R/UX-V330R	. TUNER RF/IF/FM MULTIPLEX (ONLY FOR B, E, EN, EV)
8/B	UX-V30R	. TUNER RF/IF/FM MULTIPLEX (ONLY FOR EE)

NOTE : MARK(*) IS TO SHOW DEVIATION IN VERSIONS. DETAILS ARE EXPLAINED NEAR MARK.

NOTE : MARK(*) IS TO SHOW DEVIATION IN VERSIONS. DETAILS ARE EXPLAINED NEAR MARK.

VERSION CODES

- J : U.S.A.
- B : U.K.
- E : CONTINENTAL EUROPE
- EE : RUSSIA
- EN : HINDIC COUNTRIES
- EV : EASTERN EUROPE
- A : AUSTRALIA
- UP : KOREA
- UB : SINGAPORE
- UT : TAIWAN
- UX : SAUDI ARABIA
- UY : ARGENTINA
- UB : HONG KONG
- U : UNIVERSAL EXCEPT ALL OF ABOVE

NOTES

- VOLTAGES ARE DC-MEASURED WITH A DIGITAL VOLT METER OR OSCILLOSCOPE WITHOUT INPUT SIGNAL.
CONDITION --- CD STOP MODE
INSIDE BRACKET VALUES ARE OTHER FUNCTIONS
- UNLESS OTHERWISE SPECIFIED, RESISTORS ARE 1/8W ±5% CARBON RESISTOR.
ALL RESISTANCE VALUES ARE IN OHMS (Ω).
ALL CAPACITORS ARE CERAMIC CAPACITOR OR MYLAR CAPACITOR.
ALL CAPACITANCE VALUES ARE IN PICOFARAD (pF).
ALL INDUCTANCE VALUES ARE IN MILLIHENRY (mH).
ALL CAPACITORS ARE SHOWN IN THE FORM OF CAPACITANCE (nF)/RATED VOLTAGE (V).
ALL DIODES (DiV. NBRN 1SS133-T2)

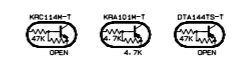


VERSION CODES

- J : U.S.A.
- B : U.K.
- E : CONTINENTAL EUROPE
- EE : RUSSIA
- EN : HINDIC COUNTRIES
- EV : EASTERN EUROPE
- A : AUSTRALIA
- UP : KOREA
- UB : SINGAPORE
- UT : TAIWAN
- UX : SAUDI ARABIA
- UY : ARGENTINA
- UB : HONG KONG
- U : UNIVERSAL EXCEPT ALL OF ABOVE

NOTES

- VOLTAGES ARE DC-MEASURED WITH A DIGITAL VOLT METER OR OSCILLOSCOPE WITHOUT INPUT SIGNAL.
CONDITION --- CD STOP MODE
INSIDE BRACKET VALUES ARE OTHER FUNCTIONS
- UNLESS OTHERWISE SPECIFIED, RESISTORS ARE 1/8W ±5% CARBON RESISTOR.
ALL RESISTANCE VALUES ARE IN OHMS (Ω).
ALL CAPACITORS ARE CERAMIC CAPACITOR OR MYLAR CAPACITOR.
ALL CAPACITANCE VALUES ARE IN PICOFARAD (pF).
ALL INDUCTANCE VALUES ARE IN MILLIHENRY (mH).
ALL CAPACITORS ARE SHOWN IN THE FORM OF CAPACITANCE (nF)/RATED VOLTAGE (V).
ALL DIODES (DiV. NBRN 1SS133-T2)

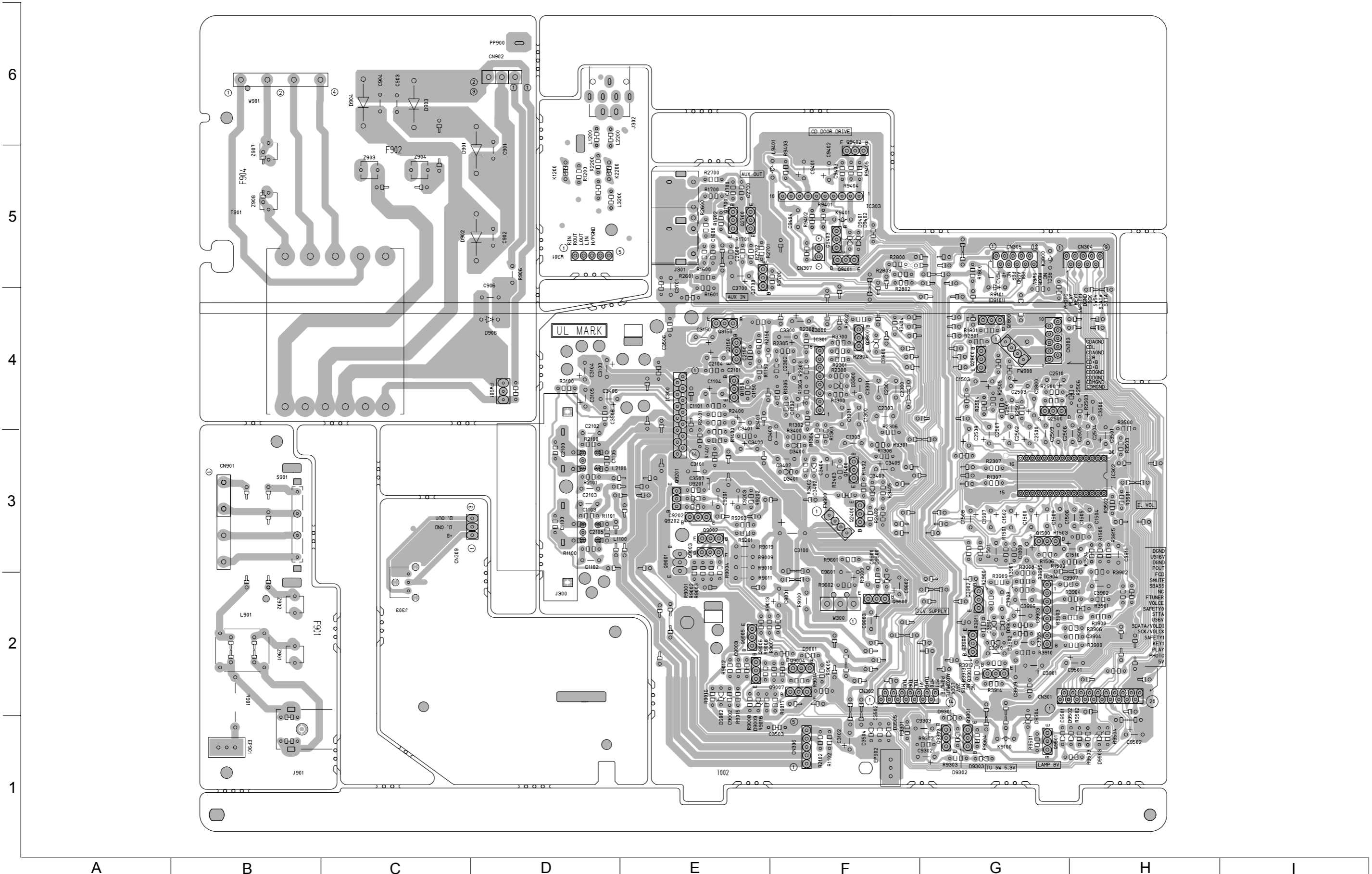


Parts are safety assurance parts. When replacing those parts make sure to use the specified one.

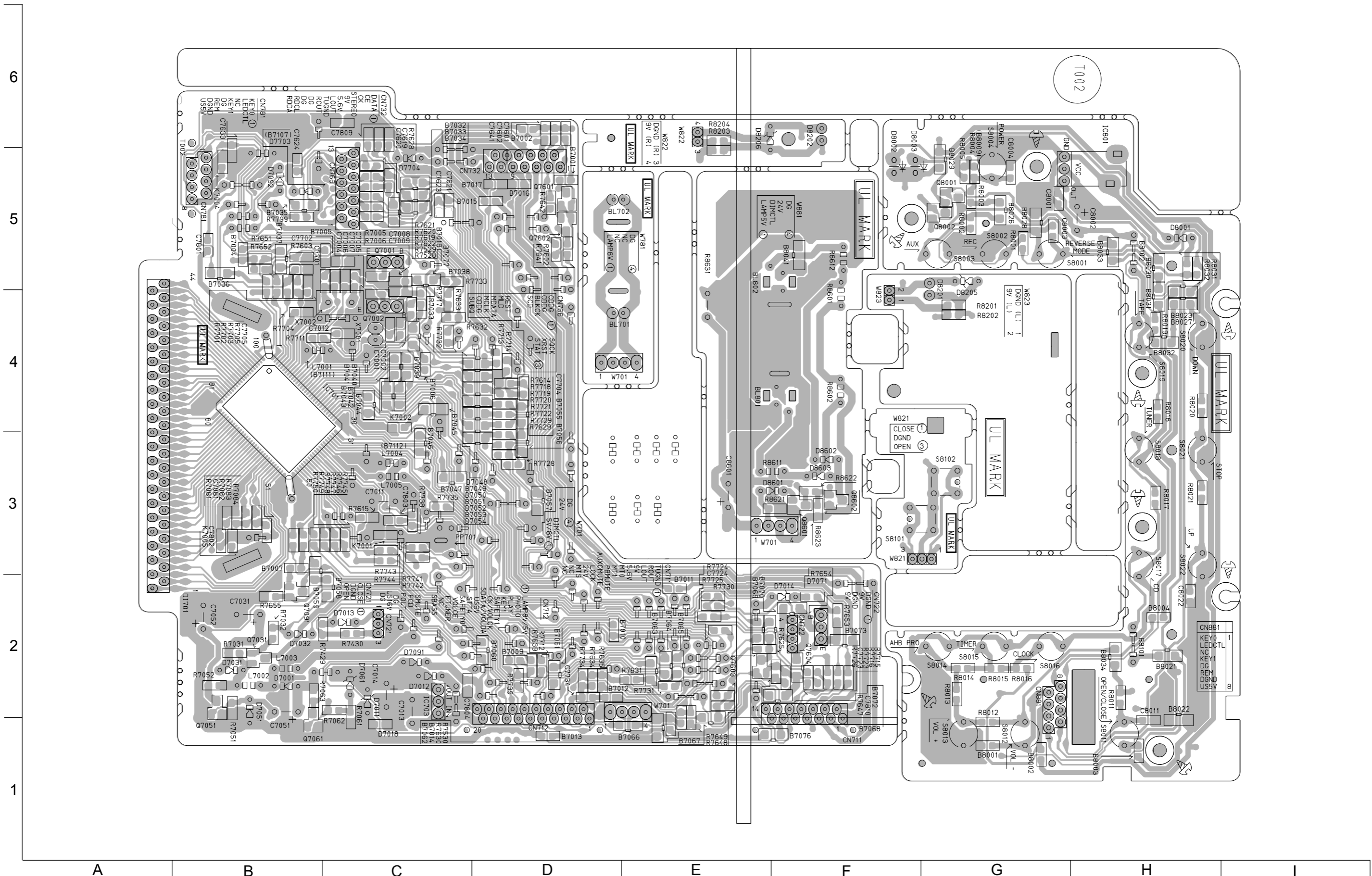
Parts are safety assurance parts. When replacing those parts make sure to use the specified one.

Printed circuit boards

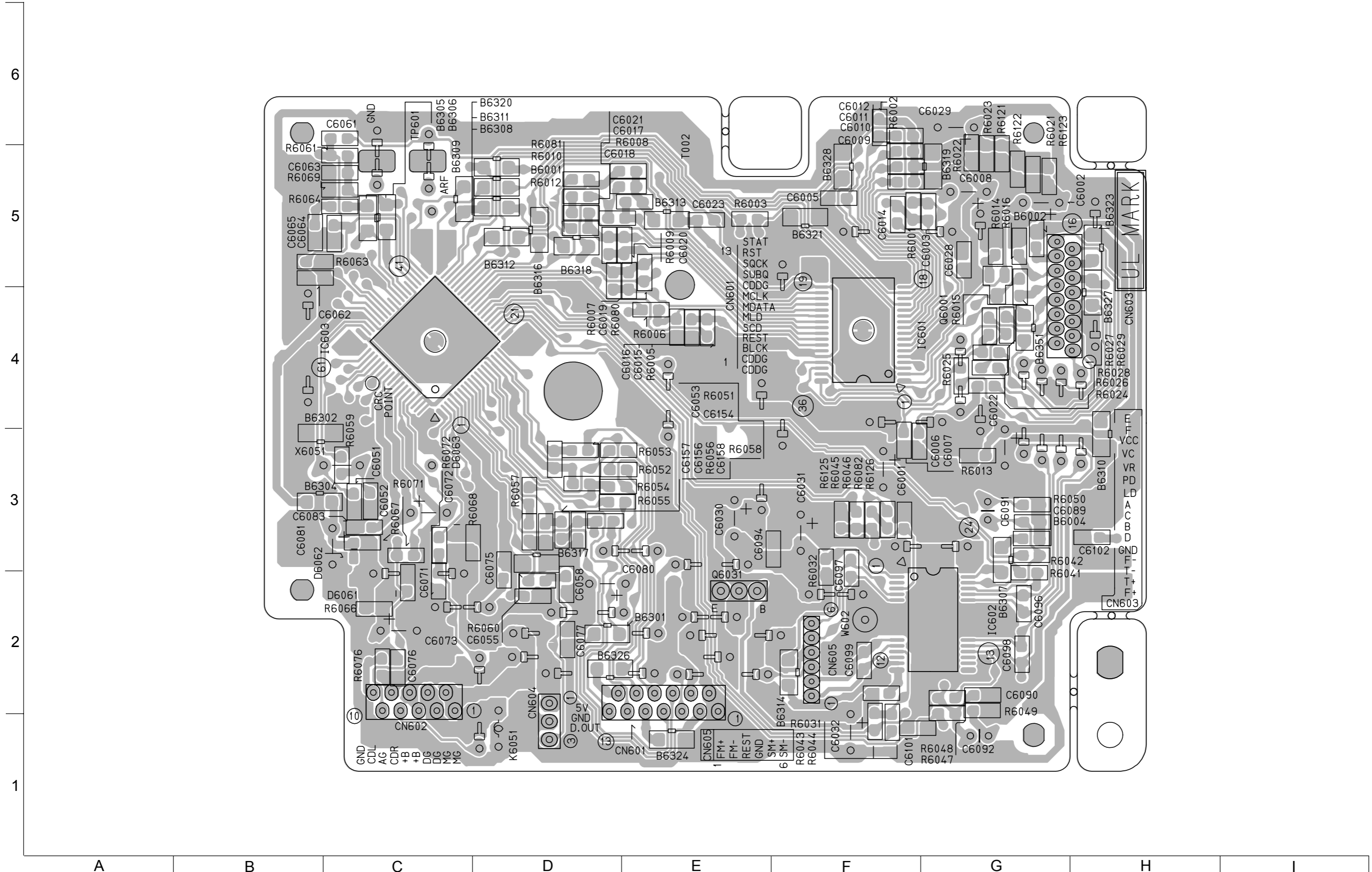
■ Main board



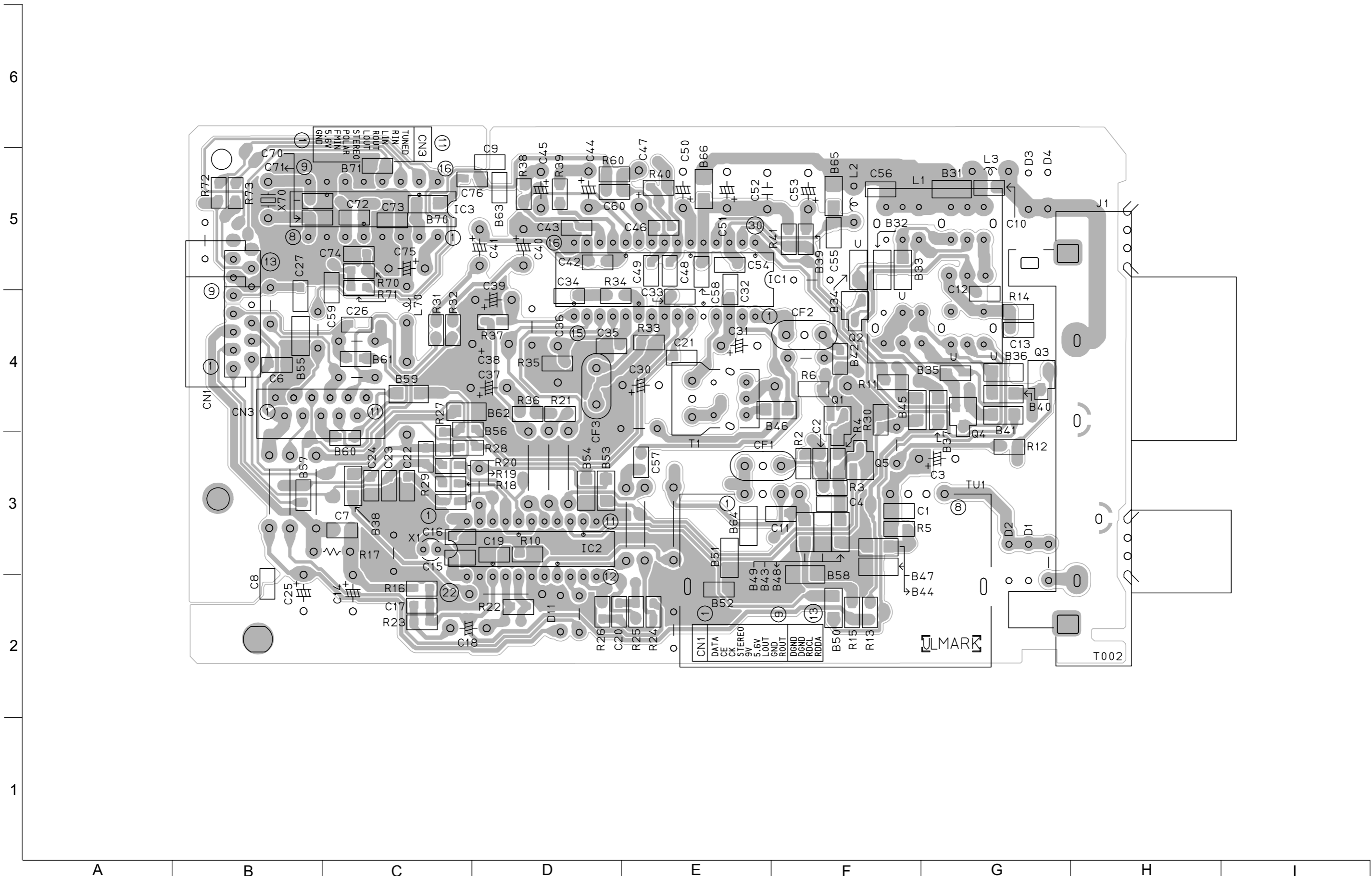
■ Micon P. C. board



CD board



■ Tuner P. W. B



<<MEMO>>